
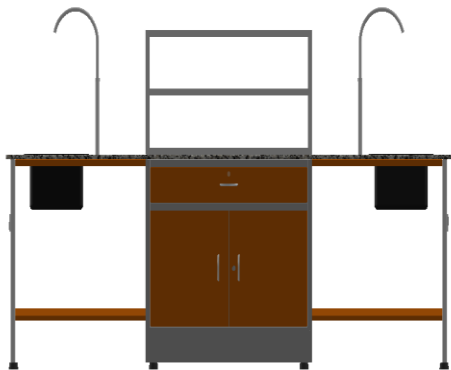
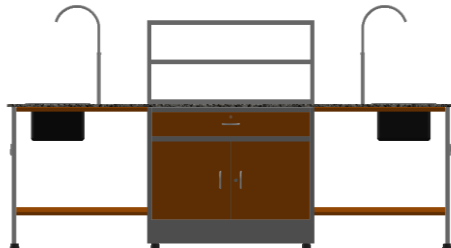
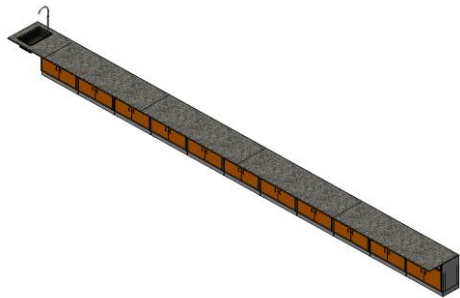
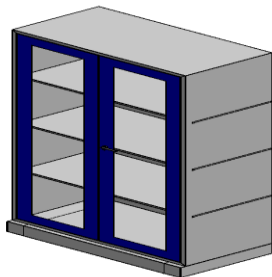




Physics & Chemistry lab requirements with particulars, specification and specific image

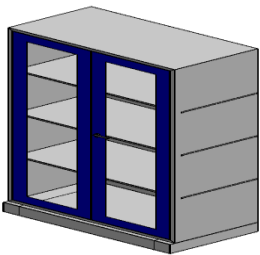
| S.No. | Particulars & Specification | QTY | UNIT | Product Image |
|-------|---|-----|------|---|
| 1 | <u>Steel Stool:</u> | 70 | No |  |
| | Size: 24"x15"x15" | | | |
| | Top: 18 mm particle board top with 2mm tape | | | |
| | Leg: 1"x1" 18g 1st quality TATA CR pipe | | | |
| | With Powder Coating | | | |
| | Refer annexure III for drawing | | | |
| 2 | <u>Chemistry Lab Table:</u> | 8 | No |  |
| | Size: 8'x39"x3' | | | |
| | Top: 18mm Jet Black Granite With One Rack | | | |
| | Storage Box: 18g 1st quality TATA CR sheet | | | |
| | Two Drawer and One cupboard | | | |
| | Cupboard inner one shelf | | | |
| | PP Sink - 2 Nos | | | |
| | Three Way Tap - 2 Nos | | | |
| | 15 Amps Electrical power socket-2 Nos | | | |
| | With powder Coating | | | |
| | Refer annexure IV for drawing | | | |
| 3 | <u>Chemistry Lab Table:</u> | 1 | No |  |
| | Size: 8'x2.1/2'x34" | | | |
| | Top: 18mm Jet Black Granite Without Rack | | | |
| | Single Storage Box: 18g 1st quality TATA CR sheet | | | |
| | Two Drawer and One cupboard | | | |
| | Cupboard inner one shelf | | | |
| | Sink - 1 No | | | |
| | Tap - 1 No | | | |
| | 15 Amps Electrical power socket-2 Nos | | | |
| | With powder Coating | | | |
| | Refer annexure V for drawing | | | |


| | | | | |
|-------------------------------|---|---|-----|---|
| 4 | <u>Chemistry Lab Storage Box: 10 Nos</u> | 1 | SET |  |
| | Size: 30'x1.1/2'x3' | | | |
| | Top: 18mm Jet Black Granite | | | |
| | Two Drawer and One Cupboard | | | |
| | Inner One Shelf | | | |
| | PP Sink - 1 No | | | |
| | Rack - 1 No | | | |
| | Sheet Thickness: 18g 1st quality TATA CR sheet | | | |
| | With powder Coating | | | |
| Refer annexure IV for drawing | | | | |


| | | | | |
|-------------------------------|---|---|-----|---|
| 5 | <u>Chemistry Lab Glass Door Cupboard:</u> | 1 | Nos |  |
| | Size: 78"x36"x19" | | | |
| | Sheet Thickness: 18x20g 1st quality TATA CR sheet | | | |
| | 4mm Saint Gobain Glass | | | |
| | With Powder Coating | | | |
| Refer annexure IV for drawing | | | | |


| | | | | |
|------------------------------|--|---|-----|---|
| 6 | <u>Physics Lab Table:</u> | 2 | Nos |  |
| | Size: 7'x30"x32" | | | |
| | Top: 18mm Jet Black Granite With One Rack | | | |
| | Storage Box: 18g 1st quality TATA CR sheet | | | |
| | Two Drawer and One cupboard | | | |
| | Cupboard inner one shelf | | | |
| | 15 Amps Electrical power socket-2 Nos | | | |
| | With powder Coating | | | |
| Refer annexure V for drawing | | | | |

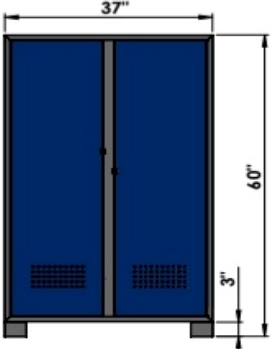
| | | | | |
|------------------------------|--|----|-----|---|
| 7 | <u>Physics Lab Table:</u> | 10 | SET |  |
| | Size: 7'.6"x39"x3' | | | |
| | Top: 18mm Jet Black Granite With One Rack | | | |
| | Storage Box: 18g 1st quality TATA CR sheet | | | |
| | Two Drawer and One cupboard | | | |
| | Cupboard inner one shelf | | | |
| | 15 Amps Electrical power socket-2 Nos | | | |
| | With powder Coating | | | |
| Refer annexure V for drawing | | | | |

| | | | | |
|------------------------------|---|----------|------------|---|
| 8 | <u>Physics Lab Glass Door Cupboard:</u> | 1 | Nos |  |
| | Size: 78:x36"x19" | | | |
| | Sheet Thickness: 18x20g 1st quality TATA CR sheet | | | |
| | 4mm Saint Gobain Glass | | | |
| | With Powder Coating | | | |
| Refer annexure V for drawing | | | | |

| | | | | |
|----------|--------------------------|----------|-----------|--|
| 9 | <u>Fume Hood:</u> | 1 | No |  |
| | Size: 1500x750x2400 mm | | | |
| | With External Blower | | | |

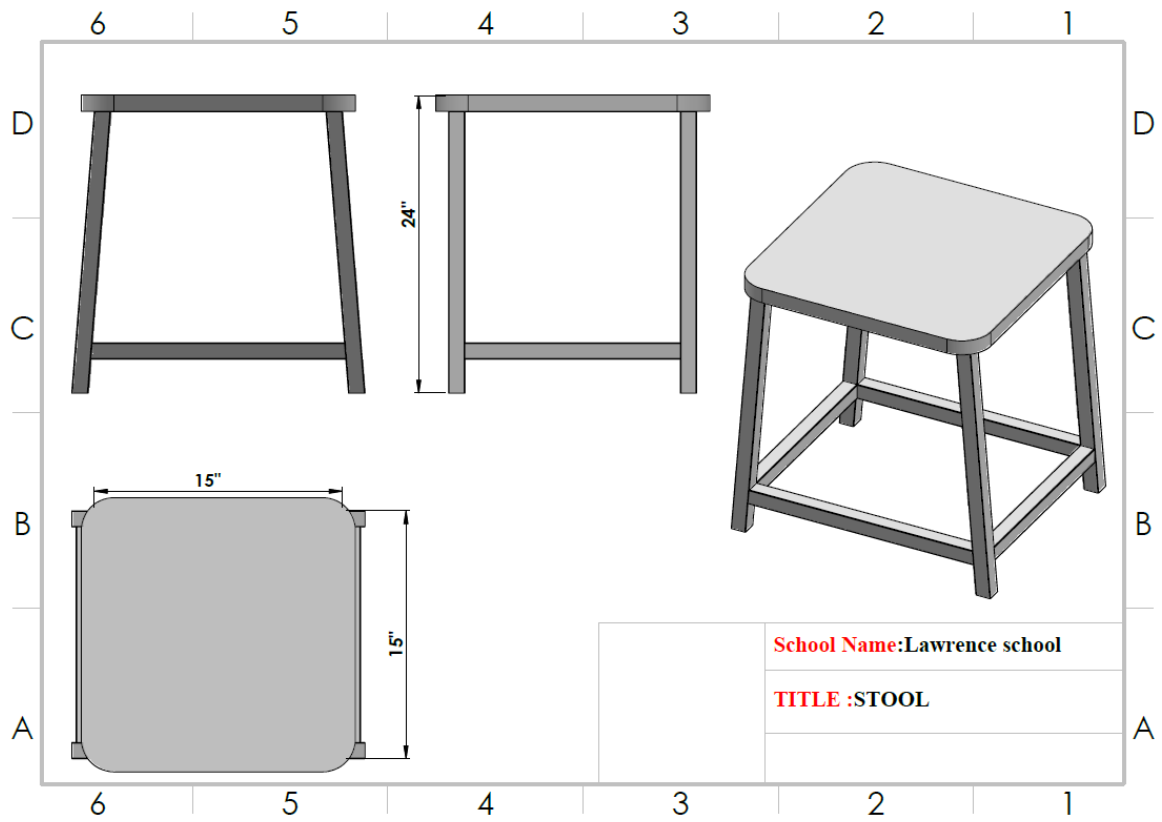
| | | | | |
|-----------|-------------------------------|----------|-----------|---|
| 10 | <u>Eye Wash Stand:</u> | 1 | No |  |
|-----------|-------------------------------|----------|-----------|---|

| | | | | |
|-------------------------------|--|----------|-----------|---|
| 11 | <u>Teacher's Table:</u> | 1 | No |  |
| | Size: 3'x2'x30" | | | |
| | Sheet Thickness: 20g 1st quality TATA CR sheet | | | |
| | Top: 18mm Particle Board Side 2mm Tape | | | |
| | Leg : 1"x1" 18g 1st Quality TATA CR Pipe | | | |
| | Drawer - 1No | | | |
| | Cupboard - 1 No | | | |
| | With Powder Coating | | | |
| Refer annexure VI for drawing | | | | |

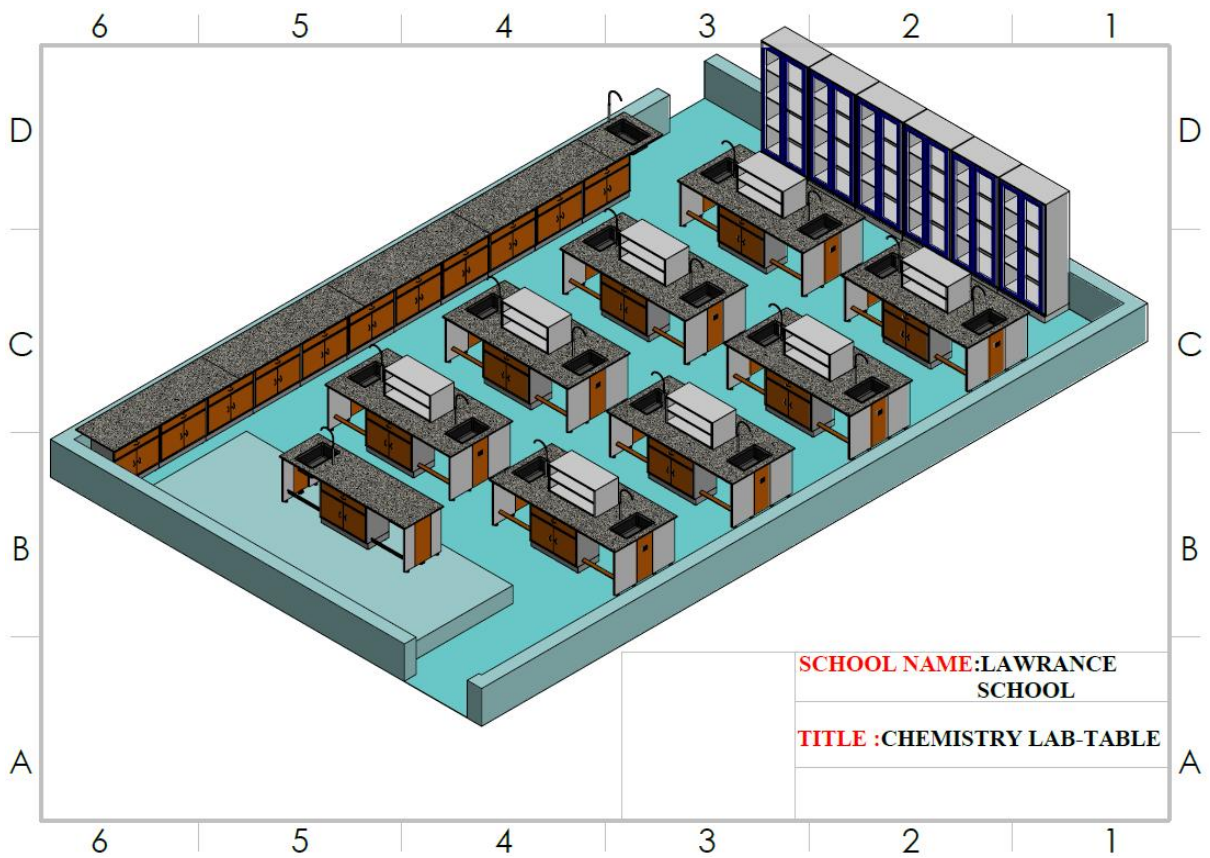
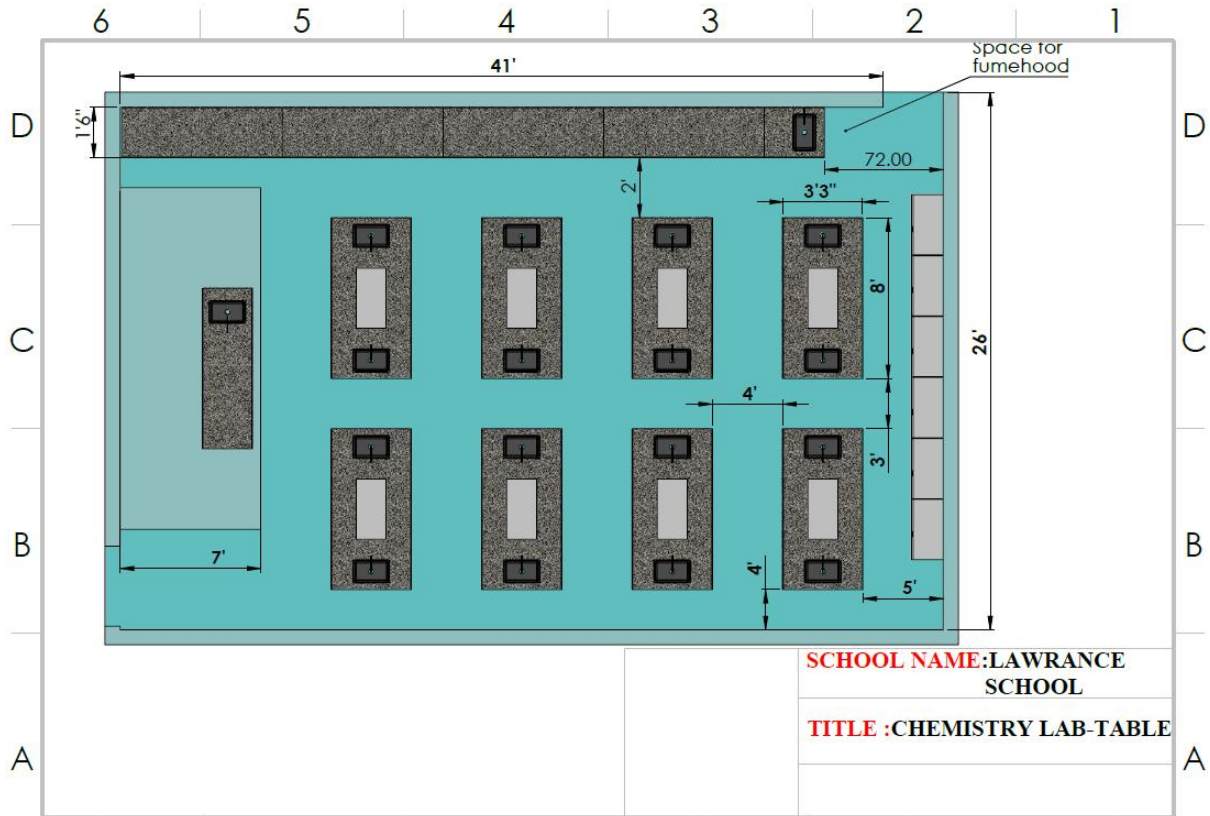
| | | | | |
|--------------------------------|---|-----------|-----------|---|
| 12 | <u>Steel Cupboard::</u> | 67 | No |  |
| | Size: 60"x37"x24" | | | |
| | Sheet Thickness: 18x20g 1st quality TATA CR sheet | | | |
| | Door with Louver holes | | | |
| | Clamp Type eith rod handle | | | |
| | Bottom one shelf and two compartments | | | |
| | With Nylon bush | | | |
| | With powder Coating | | | |
| Refer annexure VII for drawing | | | | |

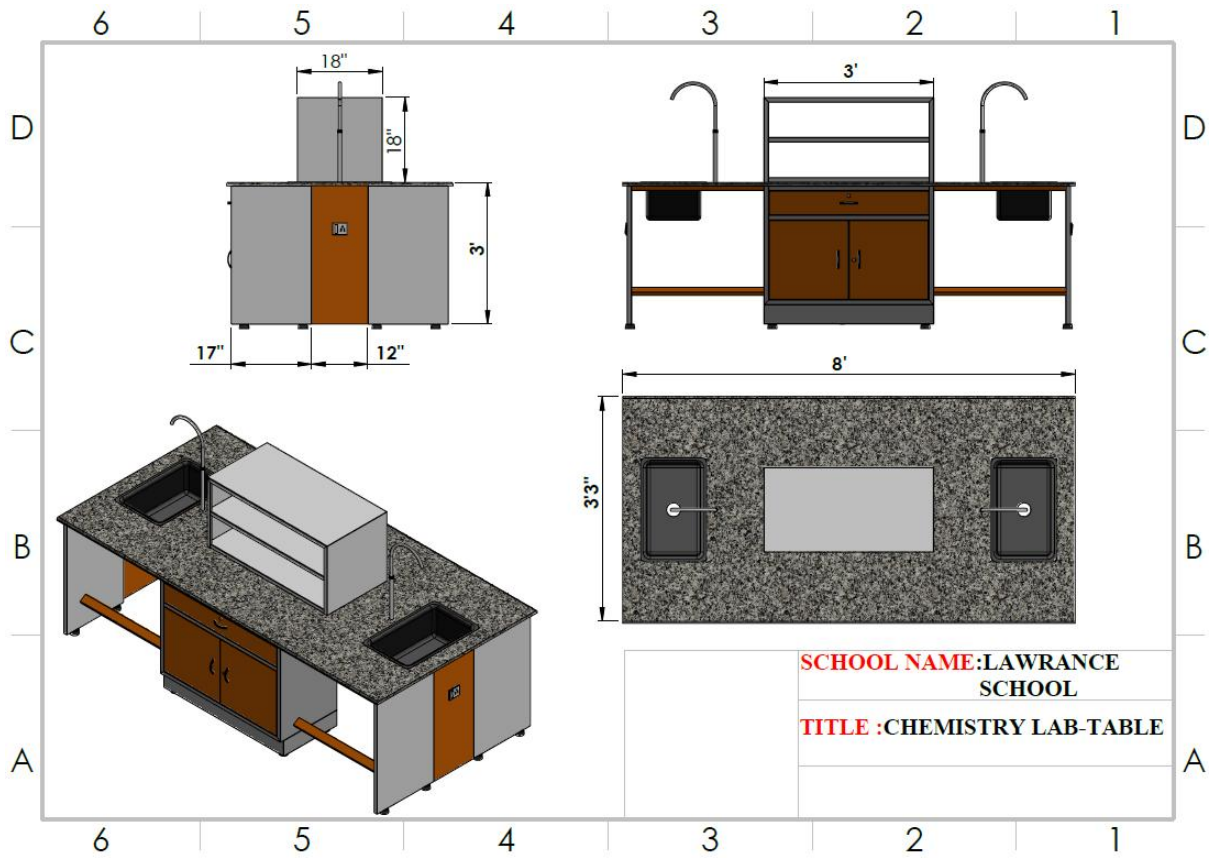
Signature of the Vendor/Supplier

Annexure III

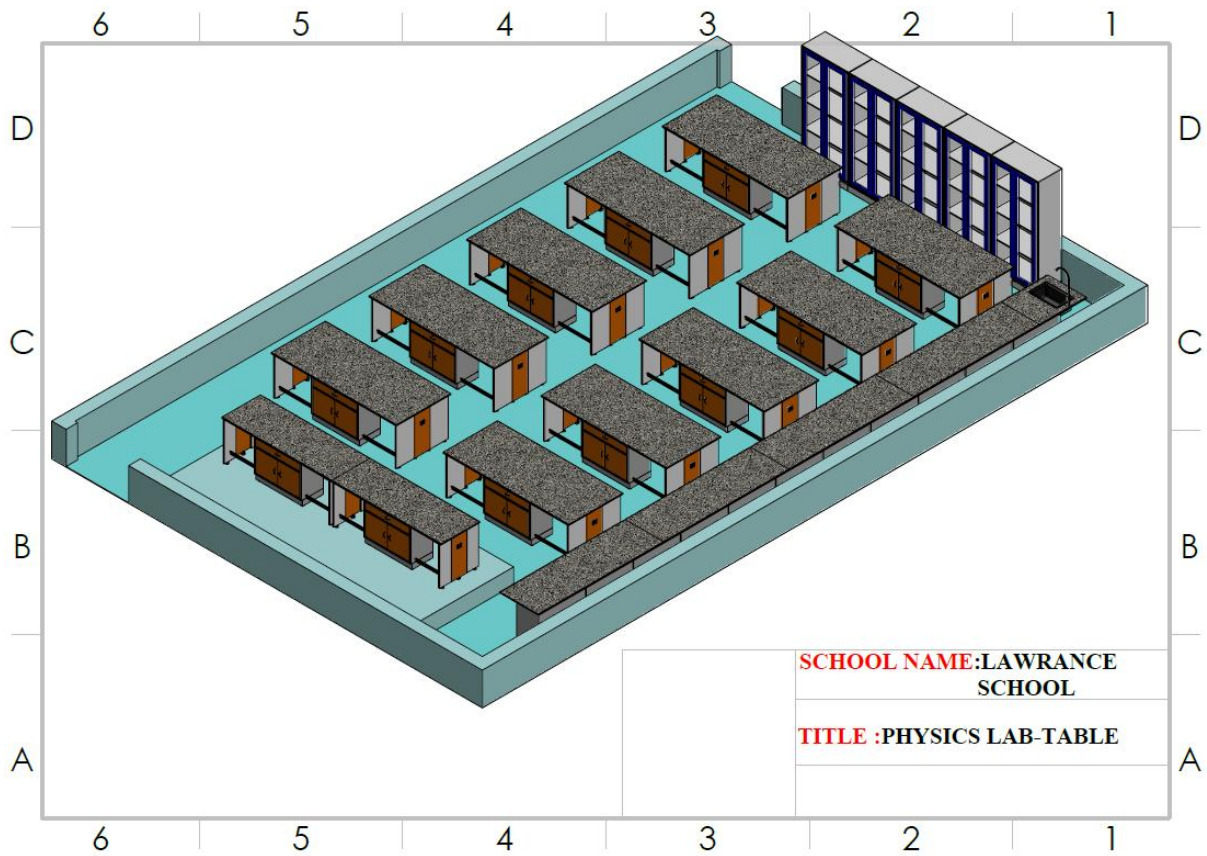
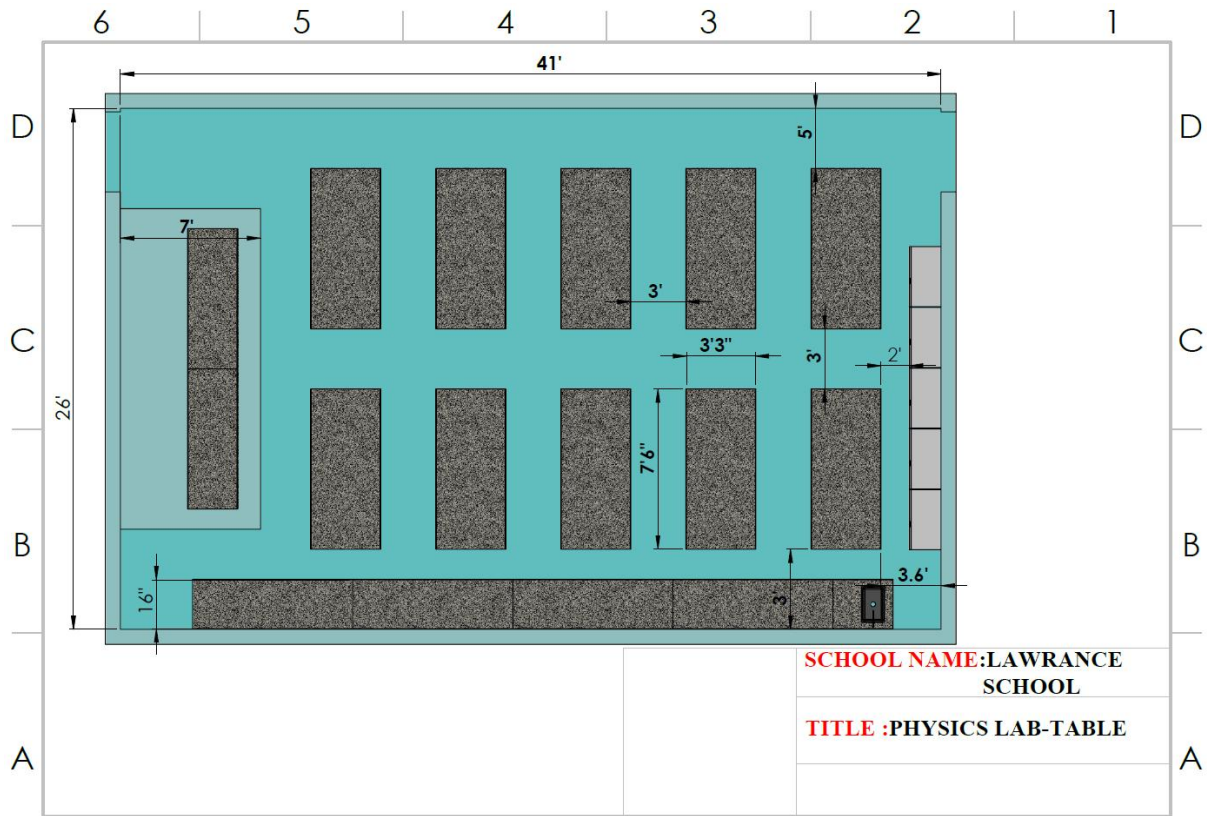


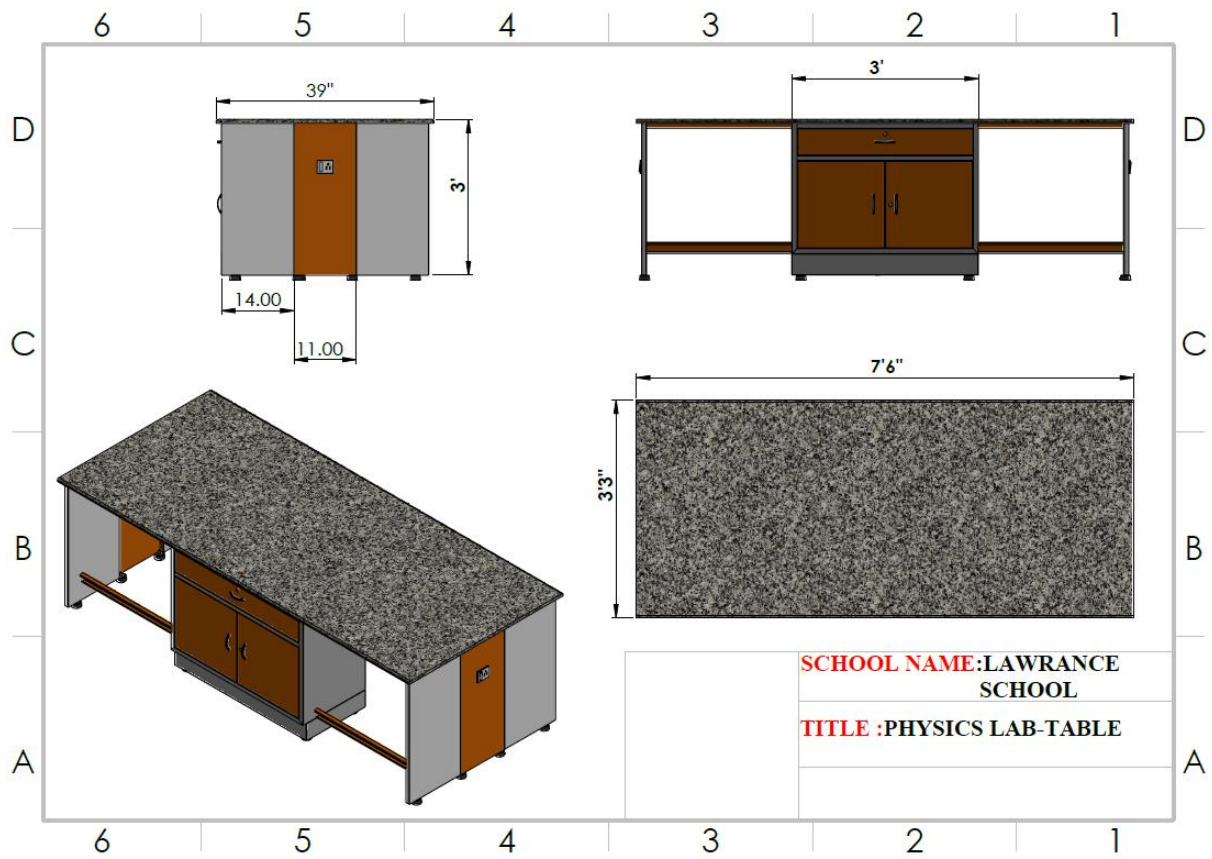
Annexure IV



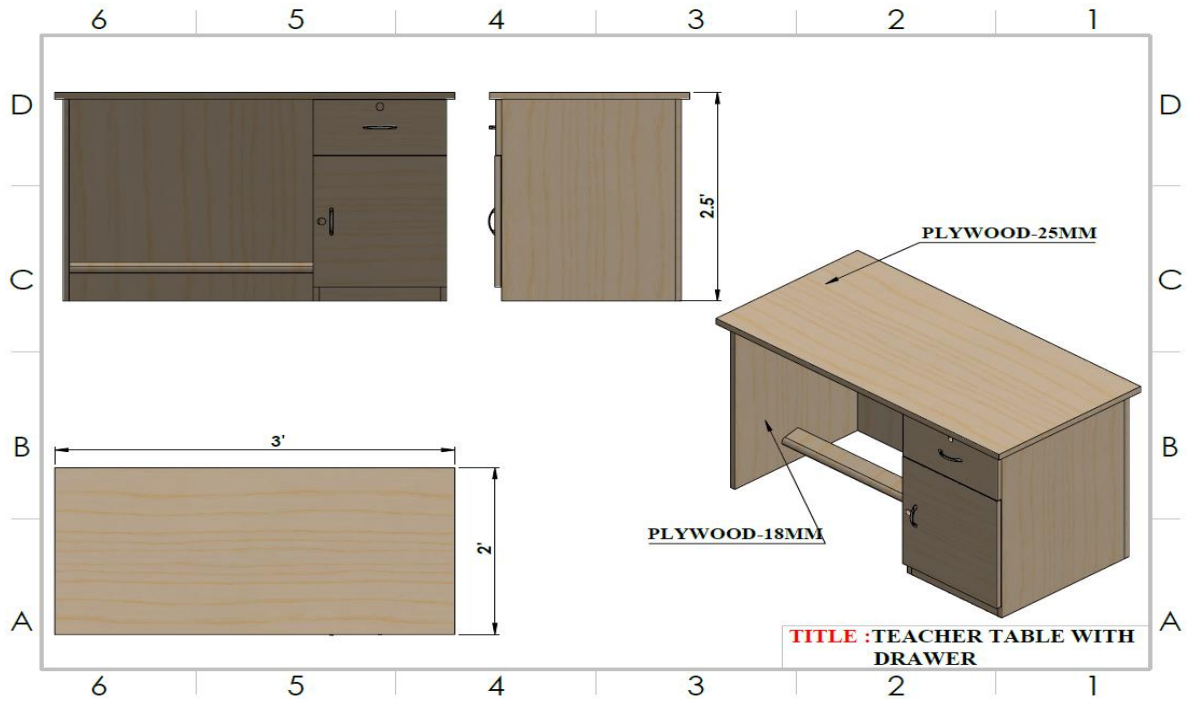


Annexure V





Annexure VI



Annexure VII

